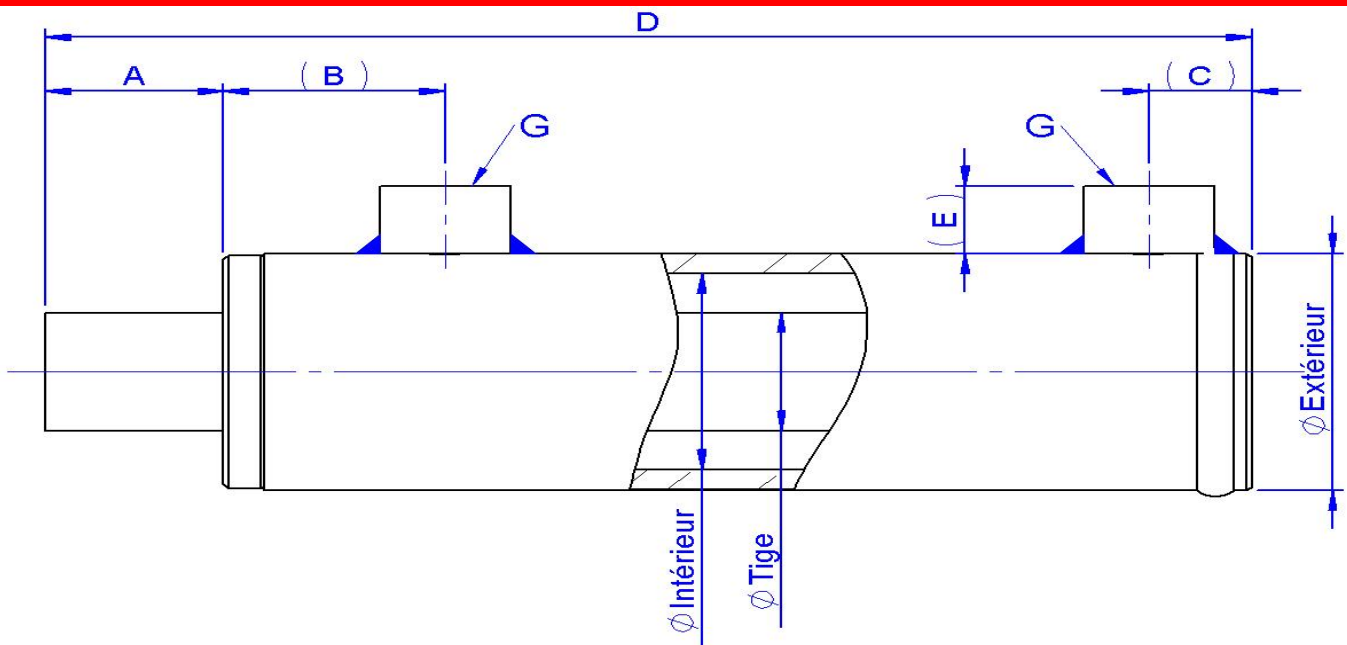
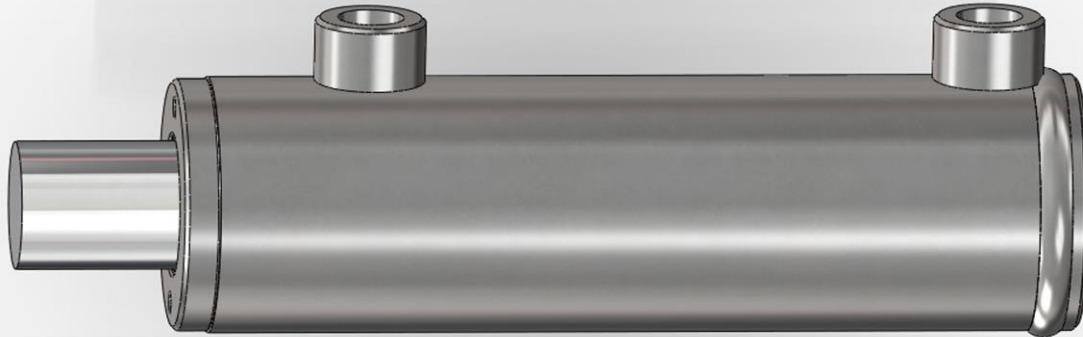


## VÉRINS INOX DOUBLE EFFET SANS FIXATIONS



Réf.	ØInter	ØTige	A	B	C	D	E	G	ØExter	Poids
941425*	25 *	16	23	45	18	120 + C	11	G1/8	35	0.75 + (0.006xC)
83315	32	20	30	40	24	125 + C	16	G1/4	40	0,96 + (0,006xC)
83316	40	20	28	41	20,5	130 + C	16	G1/4	50	1,43 + (0,008xC)
83317		25	28	41	20,5	130 + C	16	G1/4	50	1,46 + (0,009xC)
83318	50	25	35,5	44	20,5	140 + C	17	G3/8	60	2,14 + (0,010xC)
83319		30	35,5	44	20,5	140 + C	17	G3/8	60	2,19 + (0,012xC)
83320	60	30	42,5	50	22,5	160 + C	17	G3/8	70	3,27 + (0,014xC)
83321		35	42,5	51	22,5	160 + C	17	G3/8	70	3,34 + (0,016xC)
83322		40	42,5	51	22,5	160 + C	17	G3/8	70	3,44+ (0,018xC)
83323	70	35	41,5	51	22,5	160 + C	17	G3/8	80	4,25 + (0,017xC)
83324		40	41,5	51	22,5	160 + C	17	G3/8	80	4,33 + (0,019xC)
941430	80	40	31.5	60	22.5	160 + C	17	G3/8	95	6.75 + (0.22xC)
941431	90	40	24.5	60	25.5	160 + C	17	G3/8	105	8.49 + (0.27xC)